

Alien Investigation

You are an alien visiting Earth for the first time. You don't have long before you have to fly back to your home planet of Thwark. Collect as much information as you can to take back to your alien friends by visiting different areas in the Children's Garden.

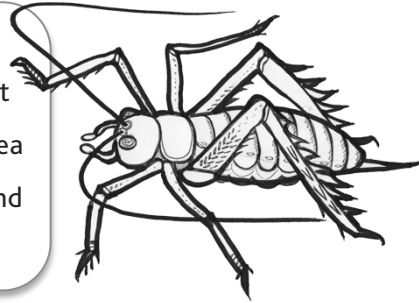
Mission 1. Visit the sun clock to find out the time and then record the weather.



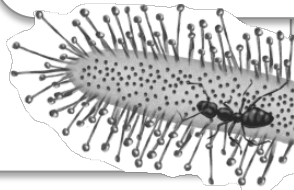
Time _____
Weather _____

Mission 2. Weta are pretty alien looking!

They evolved before the dinosaurs and are amongst the world's heaviest insects. Find the 'Grubs Up' area and check the weta box for inhabitants. Can you find any other life forms near the signs on the ground?

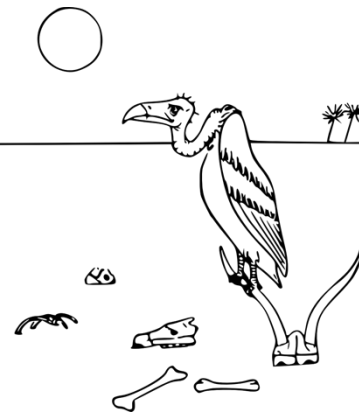


Mission 3. On Thwark the soil is low in nutrients so plants have to catch other life forms to survive. Visit the bog habitat and draw a picture of one of Earth's carnivorous plants. What is it called?



The sticky tendrils of the Sundew plant trap small insects that are then digested and absorbed into the leaves.

Mission 4. Visit the desert habitat and add a picture of your favourite cactus to this scene.



Mission 5. Explore the area around the jungle to discover....

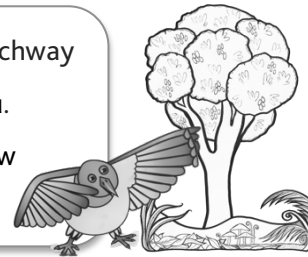
What type of plant collects 'jungle soup' _____

How many hand-spans across is the largest leaf you can reach _____

Which two 'model' animals live there _____



Mission 6. Stand quietly under the pūriri trees near the archway entrance to the garden to see if you can spot a tūi or kererū. Find the kererū signs in the native plant area to discover how kererū help New Zealand's forests to grow.



Bees see markings on flowers that people can't. The patterns help guide them to the nectar.



Mission 7. Visit the meadow. How many different coloured flowers can you find?

Mission 8. Use the back of this page to draw a picture of your home planet Thwark.

What types of life forms live there?

How many moons or suns are in the sky?

