

WHY DO SOME PLANTS HAVE FLOWERS?

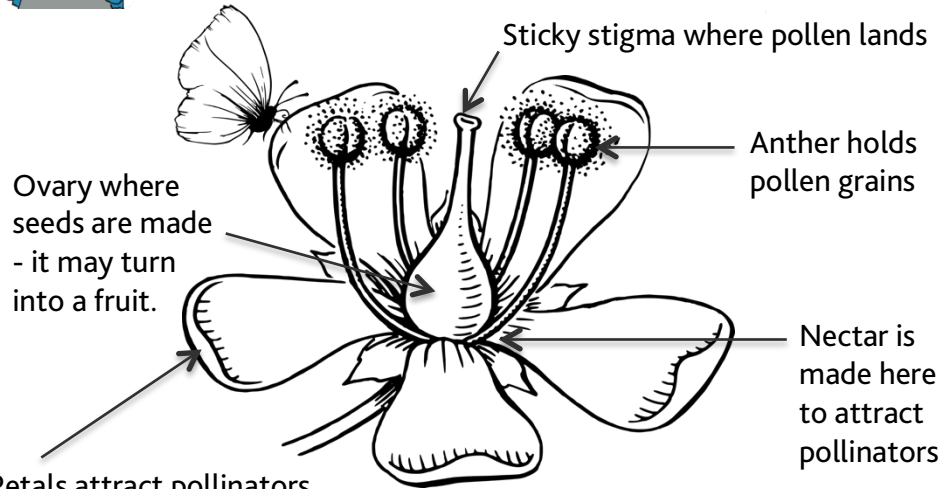
Over 80% of all plant species are flowering plants. The flowers are the reproductive part of the plant – their job is to make seeds.

Seeds contain tiny baby plants that will germinate and grow in the right conditions.



WHAT'S INSIDE A FLOWER?

Flowers come in lots of different shapes and sizes, for example a sunflower is actually a collection of up to 4000 tiny flowers!



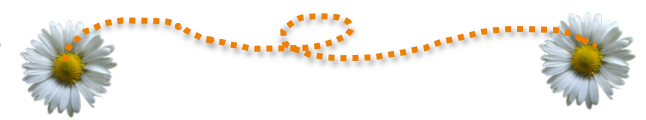
Petals attract pollinators. Bees like blue, white and yellow. Butterflies like red, yellow, orange and purple. Which colours would you use to colour the flowers on this page?

ACTIVITY IDEAS

- Find a spot to quietly watch bees collecting nectar and pollen. Look for 'pollen baskets' on their legs – bees feed pollen to their young.
- Bees can visit up to 40 flowers in 1 minute! How many can you visit?
- Blow on a dandelion flower that has turned into a 'seed clock'.
- Smell all the flowers you find on your walk today – draw a picture of the one with your favourite scent next to Molly on the front page.



WHAT IS POLLINATION?



When pollen from an anther lands on a stigma, a message is sent down to the ovary telling it to start making seeds. Use the pictures to find 10 words in the grid that describe how pollen can be moved from flower to flower.



A	E	B	C	D	W	E	F	G	B
H	F	I	J	B	I	R	D	S	U
K	L	L	M	N	N	O	P	Q	T
L	I	Z	A	R	D	S	R	S	T
T	E	U	V	W	X	H	Y	Z	E
A	S	B	C	B	A	T	S	D	R
E	F	J	K	E	L	O	M	N	F
O	P	G	Q	E	R	M	S	T	L
W	A	S	P	S	H	I	U	V	I
W	X	Z	A	D	E	F	S	X	E
B	C	Y	B	E	E	T	L	E	S

Visit www.aucklandcouncil.govt.nz and search 'Pollination' to discover how you can attract more pollinators into your garden.

Did YOU KNOW?

Nine out of ten flowering plants need animals (mostly insects) to pollinate them. Without pollinators many of the fruits and vegetables we eat wouldn't grow.



Colourful bird of paradise and hibiscus flowers near the jungle.



Long harakeke flower stalks and yellow kōwhai flowers near the lake area. Look for tūi visiting these native flowers for nectar.



Pink pūriri flowers on the trees near the main entrance to the Children's Garden. You might also spot some berries and seeds on the floor.



CAN YOU FILL IN THIS FLOWERY CROSSWORD?

ACROSS

1. A very buzzy pollinator
2. The sweet liquid inside flowers
5. Bees make this in their hive
8. A place to grow flowers
9. When pollen lands here a seed is formed
10. These tiny particles can cause hay fever

DOWN

1. Bees are attracted to this colour
3. A girls name and pretty flower
4. A yellow native flower
6. The colourful parts of a flower
7. A native bird that drinks nectar
9. This contains a baby plant

Q. How do flowers say hello to each other?
A. What's up bud?

ANSWERS: Across - bee, nectar, honey, garden, stigma, pollen Down - blue, rose, kowhai, petals, tul, seed

Auckland Botanic Gardens FABULOUS FLOWERS

THIS ACTIVITY BOOKLET BELONGS TO



FREE ADMISSION - OPEN DAILY
Auckland Botanic Gardens
102 Hill Road
Manurewa

Phone (09) 267 1457
botanic.gardens@aucklandcouncil.govt.nz
aucklandbotanicgardens.co.nz

