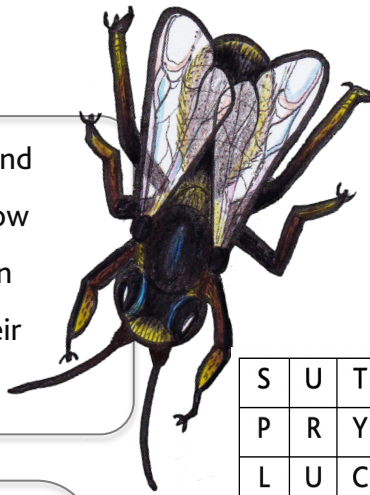


# GET TO KNOW OUR NGARO HURUHURU - NATIVE BEES

When most people think of bees, they picture fuzzy black and yellow bumblebees or a hive of honeybees, but did you know that there are 28 species of ngaro huruhuru (native bee) in New Zealand that look and behave quite differently to their foreign cousins. Let's find out more about them...

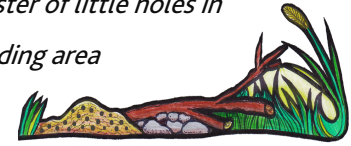


## Did you know?

Unlike honeybees, most of our native bee species are solitary and nest by themselves in small tunnels in the soil or plant matter.

Nests can be grouped together, so if you find a cluster of little holes in the ground it could be a native bee breeding area

- take care not to disturb it.



### CHALLENGE 1 – Learn to identify ngaro huruhuru

Visit [www.inaturalist.nz](http://www.inaturalist.nz) and search "NZ native bees".

Click on "Ngaro huruhuru" and then "Species" to explore photographs of New Zealand's native bees. Use the back of this page to draw a picture of each type:



#### Plaster bees (Leioproctus species)

Our most common type of native bee – there are 18 species. They are known as 'plaster bees' because they create a lining on the walls of their underground burrows. They look similar to honeybees but are smaller (5-12mm long) and don't make honey.

#### Masked bees (Hylaeus species)

They look a bit like small wasps - they are 7-9mm long and thin with very little hair. They are known as 'masked bees' due to the yellow or white patterns on their black heads.

#### Sweat bees (Lasioglossum species)

The smallest of our native bees (4-8mm long). They range in colour from green to black and can be attracted to sweaty skin!



S	U	T	C	O	R	P	O	I	E	L	M
P	R	Y	E	R	N	I	R	I	Y	N	A
L	U	C	E	P	E	R	A	M	R	E	S
A	H	H	B	K	C	U	G	A	A	L	K
S	U	E	V	I	T	A	N	N	T	L	E
T	R	B	N	W	A	U	T	U	I	O	D
E	U	E	E	I	R	R	U	K	L	P	Q
R	H	Y	L	A	E	U	S	A	O	E	R
M	U	S	S	O	L	G	O	I	S	A	L

### CHALLENGE 3 – Find a flower that native bees like to visit

Native bees are important pollinators of native plants. They usually don't fly further than 100m to forage for nectar and pollen. Some of their favourite flowers include koromiko (hebe), mānuka, kānuka and pōhutukawa. Some species also pollinate crops such as kiwi and apples. Visit our Herb and Edible Gardens, Children's Garden, and Native Plant Gardens to quietly watch visiting bees and get some ideas for attracting native bees to your garden.

#### Colour me



Native bees are attracted to red pōhutukawa flowers

Koromiko are often purple, lilac or white.



For more fun activity sheets visit the Kid's Corner on our website [www.aucklandbotanicgardens.co.nz](http://www.aucklandbotanicgardens.co.nz)