



Our Salvia, Rose and Perennial Gardens will be bursting with colour and buzzing with insects at this time of year. There are plenty of shady places to enjoy including our Native Plant Trail, Podocarp Valley and Urban Tree area; or take a stroll through the Palm Garden, where you can relax next to the soothing sounds of a stream and enjoy the vibrant beauty of tropical flowers. We hope you enjoy finding some new areas of the gardens to relax in and explore over Summer.



Look out for tūi and tauhou (silvereye) visiting the bright red flowers of pōhutukawa, New Zealand's Christmas Tree.

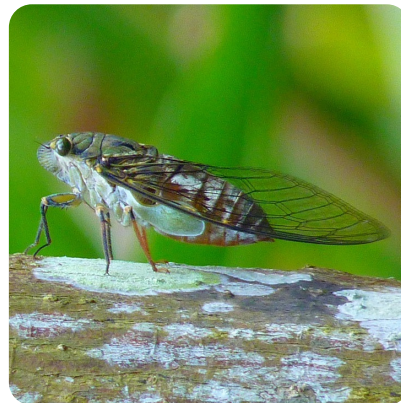
Pekapeka (bats) visit the flowers at night to feed on nectar and are important pollinators of pōhutukawa.



Can you find a rainbow of different coloured flowers?



Find some quirky looking succulents and cacti in our Rock Garden. They are well adapted to dry conditions. Some have funny names - which one is your favourite?



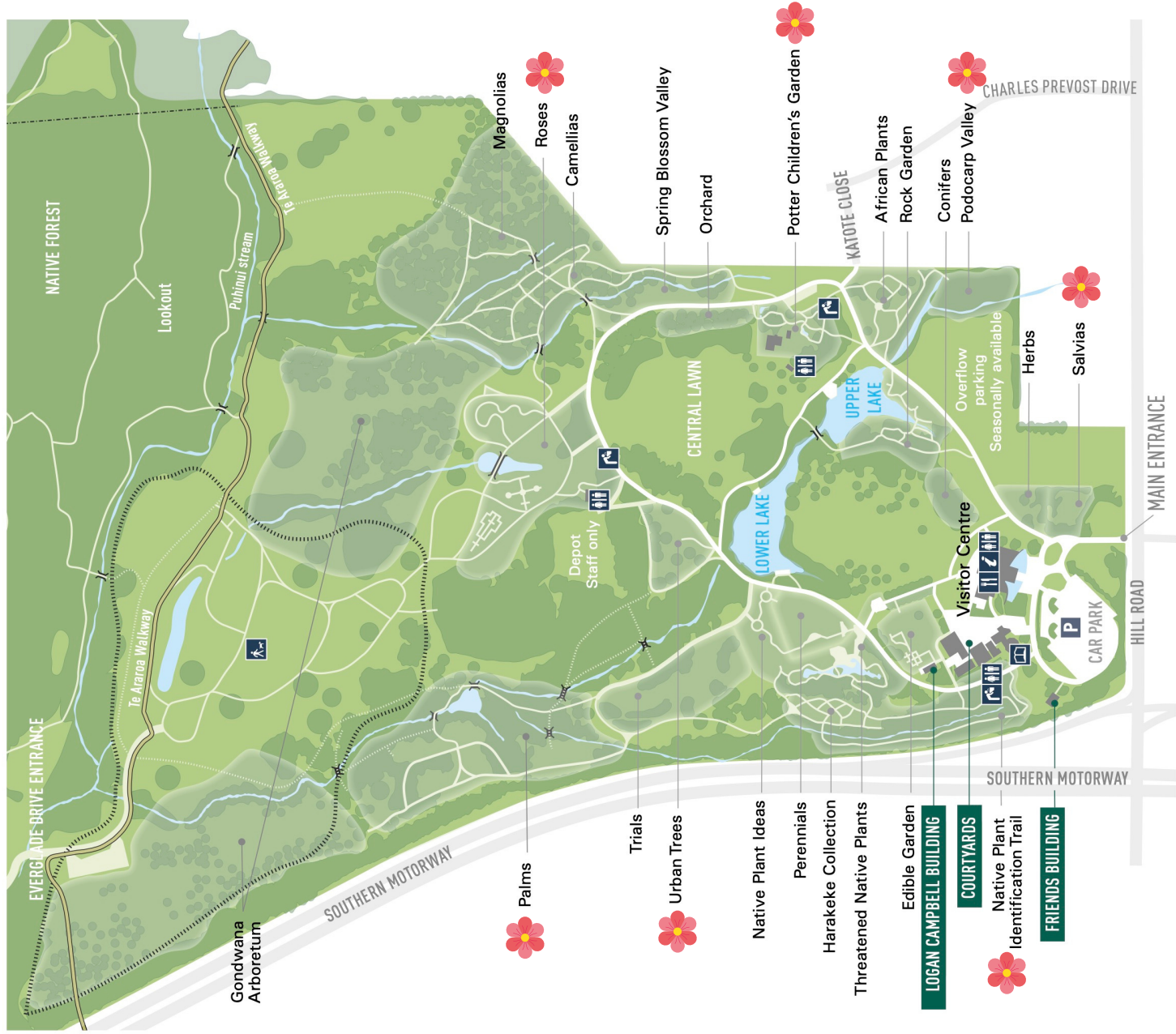
Sit under a tree to see if you can hear the loud clicking of male cicadas. Special membranes in their abdomens create sound to attract females. You might find their brown exoskeletons on the trunks of some trees.

Use our online 'Garden Explorer' tool aucklandbg.gardenexplorer.org to go on a hunt for different varieties of roses. Choose 'Rosaceae - Rose' in the 'Family' dropdown menu and click 'Search' to find them on the map.

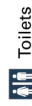


We would love to see the photos you've taken during your visit today. Tag us on Facebook or Instagram @aucklandbotanicgardens

*Please be mindful of creating space for other people during your visit.
Remember to scan or sign in when you arrive and try heading 'off the beaten track' to avoid busy areas.*



KEY



Toilets



Information



Cafe



Drinking fountain



Library



Bridge



Off-leash dog walking area



Stream/lake



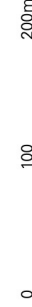
Parking



Gardens that are lovely to visit in Summer



North



Auckland Botanic Gardens
Where ideas grow



FREE ADMISSION | OPEN DAILY

102 Hill Road, Manurewa, Auckland | Phone (09) 261 1437

aucklandbotanicgardens.co.nz | botanic-gardens.aucklandcouncil.govt.nz



Auckland Council
Te Kauhanga o Tamaki Makaurau